

# MAGNIFIQUE MEETINGS

SOFITEL  
LEGEND

Sofitel Legend The Grand Amsterdam is the perfect location for discreet board meetings to lavish banquets and from conferencing events to weddings. The Grand provides banqueting facilities in one of the most sought-after properties in the city centre of Amsterdam; offering premier conference facilities and the Magnifique Meetings™ concept, which combines the latest conference technology with excellent service and facilities.

### Former City Hall

The Grand boasts nineteen meeting rooms and banqueting halls in total, covering 1400 m<sup>2</sup> (15,070 ft). Five of these rooms are listed as historical monuments and were taken into use when The Grand formerly served as City Hall of Amsterdam: the Council Chamber, the Burgomaster and Aldermans Chamber, the St. Cecilia and the beautiful First Class Marriage Chamber. These historic rooms boast natural daylight, canal or garden view and all have a different magnifique story.

### Princenhof

The Princenhof, once functioning as accommodation for amongst others Prince William of Orange and the French Queen Maria de Medici, holds fourteen contemporary meeting rooms, all equipped with modern audio-visual facilities. It is the perfect venue for private meetings and conferencing events.

### Unique and tailor-made banqueting

Dedicated to your event, the Magnifique Meeting™ planners will assist you in planning your event to the smallest details, to ensure a seamless service and stress-free experience.

Whether you are organising a board meeting or a private dinner, the Magnifique Meeting™ planners will plan your event into detail and work closely together with the Executive Chef of The Grand to not only provide you with the best accommodation and facilities, but also with a culinary menu that suits your wishes and preferences.

Additionally, Michelin-star restaurant Bridges features an exclusive dining room that can accommodate up to 12 guests. Flooded with natural daylight and with pleasant views on one of Amsterdam's oldest canals, guests can enjoy a Michelin-star dinner of Chef de Cuisine Raoul Meuwese and his team up to 6 courses.

## Turn your meetings into a Magnifique Meeting™



Council Chamber



Princess



Burgomaster



Admiralty

### Magnifique facilities

Located between two historical canals in the heart of Amsterdam, The Grand boasts a rich history. From a 15th-century convent to royal lodgings to Dutch Admiralty headquarters to the City Hall of Amsterdam. The Grand offers five-star luxury in a unique 'Amsterdam' ambiance, furnished with French elegance and grandeur.

The Grand has 177 spacious rooms, including 52 luxury suites with butler service. The Sofitel SPA offers a real escape from the hustle and bustle of the city, with special treatments, a heated indoor swimming pool and sauna facilities. The hotel features exclusive food & beverage facilities, such as Michelin-star restaurant Bridges, gardenbistro Oriole and the typical Dutch brown café The Flying Dutchman; ideal places to enjoy a wonderful lunch or dinner or to enjoy a drink at the end of the day.

Next to the on-site activities, The Grand can of course also assist in organising off-site activities, such as boat cruises and bike tours.



Grand Boardroom

## MAGNIFIQUE MEETINGS

### Magnifique Meetings™ mission statement

Magnifique Meetings™ planners are experts who capture the essence of your event, in order to make it as unique and personalised as possible. Committed to ensure successful and tailor-made meetings and events, your dedicated Magnifique Meetings™ planner will suggest creative and custom-made banqueting and event options. Additionally, they will customise the venue with modern and high-tech equipment to fit your needs, recommend innovative activities to stimulate your participants and much more.

**Main building**  
**Ground floor**

1. Entrance
2. Restaurant Bridges
3. Restaurant Bridges, private dining
4. Restaurant Bridges, Chef's Table
5. Gardenbistro Oriole
6. The Flying Dutchman
7. The Floral Designers

**Historical Meeting Rooms**

**First floor**

8. Alderman's Chamber
9. St. Cecilia Chamber
10. Burgomaster's Chamber
11. Marriage Chamber
12. Council Chamber
13. Balcony
14. Garden Terrace
15. Courtyard

**Princenhof**  
**meeting & convention centre**

**Princenhof meeting & convention centre**

**Ground floor**

16. Grand Duke
17. Grand Boardroom
18. Admiralty



**First floor**

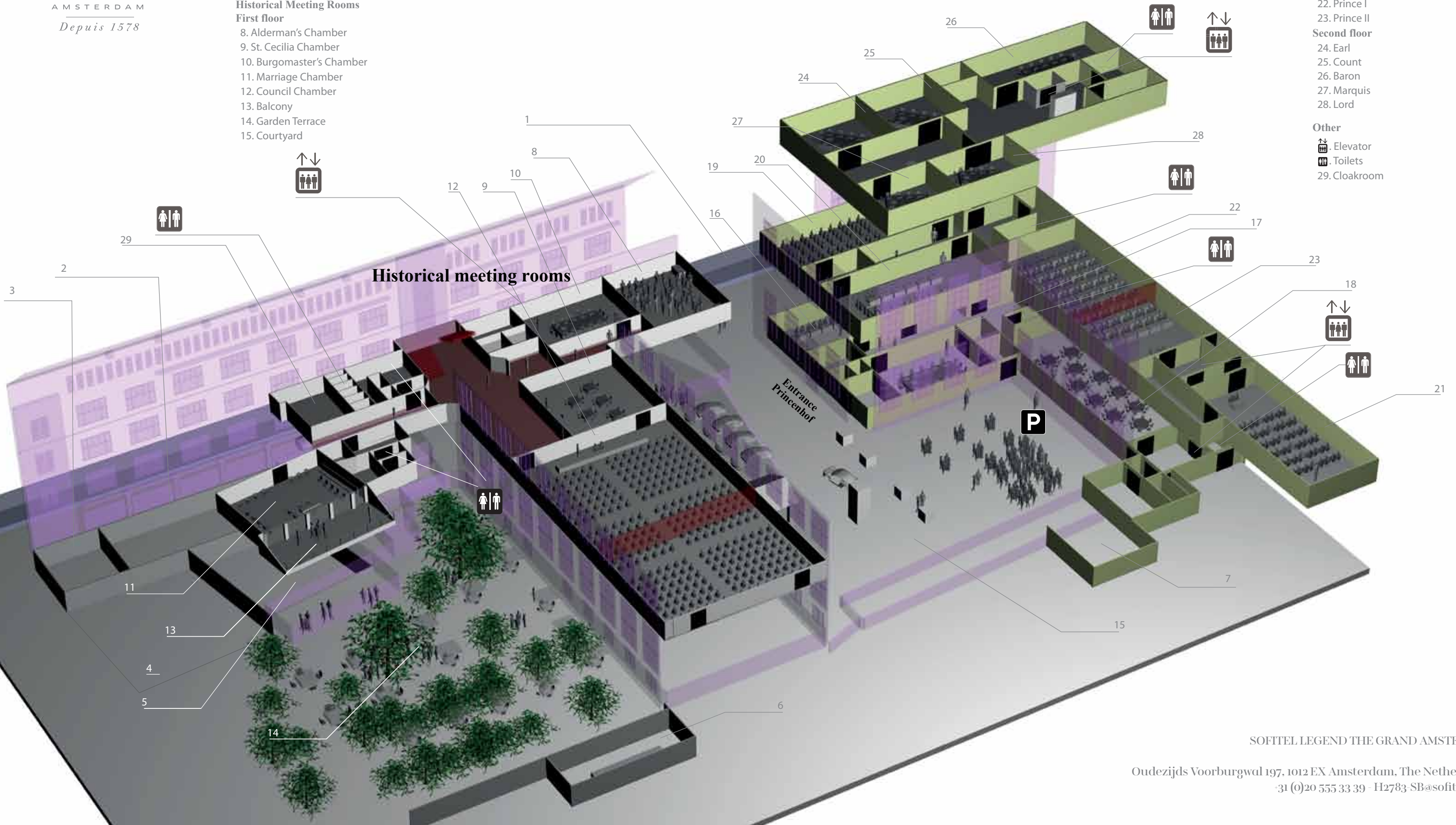
19. King
20. Queen
21. Princess
22. Prince I
23. Prince II

**Second floor**

24. Earl
25. Count
26. Baron
27. Marquis
28. Lord

**Other**

-  Elevator
-  Toilets
- 29. Cloakroom



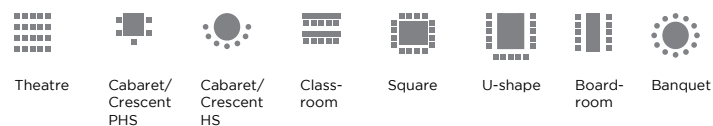
# Capacity Magnifique Meetings™ rooms

All rooms have air-conditioning / air-cooling, no pillars and natural daylight.

	L	W	H	M <sup>2</sup>	Ft <sup>2</sup>	Theatre	Cabaret/ Crescent PHS (5 pax/table)	Cabaret/ Crescent HS (6-8 pax/table)	Classroom	Square	U-Shape	Boardroom	Banquet	Cocktail
Council Chamber	21.7	13.6	4.7	295	3175	320	-	152	140	-	-	-	200	300
* Council Chamber I	13.6	13.0	4.7	177	1905	200	-	88	72	48	36	36	110	175
* Council Chamber II	14.0	8.7	4.2	122	1313	120	-	64	45	32	23	24	90	125
St. Cecilia Chamber	8.0	7.5	5.0	60	645	50	-	21	27	32	24	20	40	60
Aldermans Chamber	8.1	7.0	3.0	57	613	40	-	21	24	24	24	20	40	60
Burgomaster Chamber	8.2	5.3	3.0	43	462	30	-	-	18	-	-	20	30	40
Marriage Chamber	8.0	6.4	3.2	51	548	45	-	-	-	-	-	20	20	40
* Balcony	8.0	6.4	3.2	51	548	-	-	-	-	-	-	-	-	25
Admiralty	19.0	7.6	3.7	144	1550	110	56	-	-	-	-	-	100	150
Grand Boardroom	9.7	5.8	4.2	56	602	-	-	-	-	-	-	18	-	-
Grand Duke	6.7	5.9	3.6	39	419	30	14	-	12	16	12	12	20	30
Prince	19.4	8.0	3.3	155	1668	150	75	-	72	54	46	40	80	150
* Prince I	11.4	8.0	3.3	91	979	100	45	-	45	36	32	30	50	90
* Prince II	8.0	8.0	3.3	64	688	50	30	-	27	24	16	14	30	60
Queen	13.8	6.2	3.2	85	914	80	30	-	30	26	32	28	40	100
King	15.2	6.2	3.8	94	1011	80	30	-	30	26	32	28	40	100
Princess	17.4	6.0	2.8	104	1119	80	30	-	30	26	28	28	-	100
Lord	7.2	5.9	2.7	42	452	-	-	-	-	-	-	14 <sup>A</sup> /16 <sup>B</sup>	-	-
Marquis	6.0	4.7	2.7	28	301	-	-	-	-	-	-	8 <sup>A</sup> /10 <sup>B</sup>	-	-
Earl	6.0	4.7	2.8	28	301	-	-	-	-	-	-	5 <sup>A</sup> /8 <sup>B</sup>	-	-
Count	6.5	5.9	2.8	38	409	-	-	-	-	-	-	14 <sup>A</sup> /16 <sup>B</sup>	-	-
Baron	9.5	4.6	2.8	43	462	-	-	-	-	-	-	10 <sup>A</sup> /12 <sup>B</sup>	-	-
Foyer I	6.5	3.4	3.8	22	236	-	-	-	-	-	-	-	-	20
Foyer II	6.0	3.5	2.8	21	226	-	-	-	-	-	-	-	-	20

All figures based on new furniture, safety regulations

<sup>A</sup> with screen  
<sup>B</sup> without screen





HOTEL  
**THE GRAND**  
AMSTERDAM  
*Depuis 1578*

19 meeting rooms, including 5 historical rooms  
All with natural daylight and air-conditioning  
7 private dining rooms

177 guestrooms, including 52 suites with butler service

2 restaurants & 3 bars  
Bridges |\*|, including private dining  
Oriole  
The Flying Dutchman  
Library 'Or'

Sofitel SPA & Sofitel FITNESS  
Valet parking  
Free Wi-Fi

MAGNIFIQUE  
MEETINGS

Sofitel Legend The Grand Amsterdam  
Oudezijds Voorburgwal 197  
1012 EX Amsterdam - T +31(0)20 555 31 11  
[www.sofitel-legend-thegrand.com](http://www.sofitel-legend-thegrand.com)

  [SofitelLegendTheGrandAmsterdam](https://www.facebook.com/SofitelLegendTheGrandAmsterdam)

SOFITEL  
**LEGEND**