

S O F I T E L
HOTELS & RESORTS

BALI NUSA DUA BEACH RESORT

MAGNIFIQUE MEETING™





TABLE OF CONTENTS

WELCOME	4
LUXURY BEACHFRONT GETAWAY	6
MAGNIFIQUE FACILITIES	8
SERIOUS FUN	10
LA VILLA DES ENFANTS	12
GET ACTIVE	14
TEAM BUILDING	18
RELAX	20
DINE AND PARTY	22
LOCAL EXCURSION	24
ACCOMMODATION	28
RESORT MAP	30
MEETING CAPACITY	32
MEETING ROOMS	34
RESTAURANT AND BAR	38
CONTACT	40



SOFITEL BALI NUSA DUA BEACH RESORT

Sofitel Bali Nusa Dua Beach Resort offers an innovative blend of sophisticated facilities and superior organisation. From customised setups and state-of-the-art technology to décor, music and sound, your personal MagnifiqueMeetings™ team planner will help you create a truly unique occasion.





LUXURY BEACHFRONT GETAWAY

Discover this stunning address, blending authentic Balinese charm and French elegance, situated in the peninsula of the exotic island of the gods. Located within the Indonesia Tourism Development Corporation complex of Nusa Dua, one of the island's most affluent addresses, Sofitel Bali Nusa Dua Beach Resort is within 10 minutes from Ngurah Rai International Airport and 15 minutes from Denpasar. It also features several attractions nearby such as the fascinating Waterblow, as well as one of the best museums in Bali (Pasifika Museum), Jimbaran beaches with their fantastic sunset seafood dinners, and Uluwatu which is one of Bali's most famous temples overlooking waves that are excellent for surfing. of-the-art sound systems. Professional lighting, free Wi-Fi and broadband connectivity are bound to make any meeting requirements a breeze and full of inspirations.





AN IMMERSIVE EXPERIENCE

MAGNIFIQUE FACILITIES

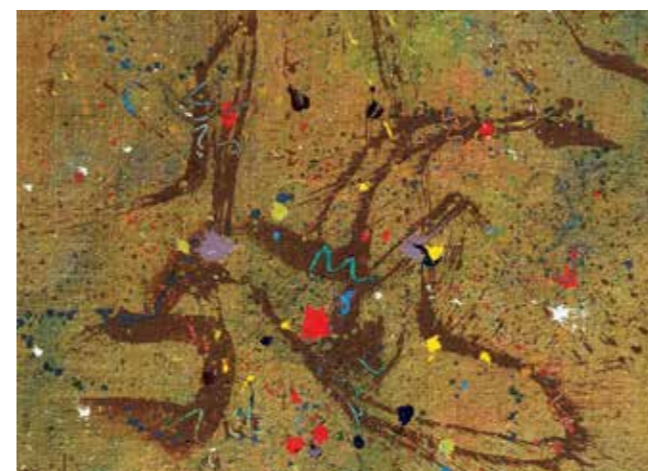
From initial planning to flawless execution, the MagnifiqueMeetings™ team will leave no detail overlooked, ensuring a successful and sophisticated meeting or event. Complementing state of the art meetings and events, delegates and guests are afforded luxurious facilities. Surrounded by swaying palms, white sand beaches and inviting turquoise waters, Sofitel Bali Nusa Dua Beach Resort brings all the key elements of a premium international beachfront resort to one of the world's most sought-after holiday and business travel destinations.



WELLNESS



WINE & DINE



ART



CULTURE





SERIOUS FUN

In the evening hours, Sofitel Bali Nusa Dua Beach Resort's LOH Bar thrives as a sanctuary for the fashionable crowd. It offers a late-night hangout, a place to see and be seen. Beyond an award-winning cocktail and wine list, Sofitel Bali Nusa Dua Beach Resort's LOH Bar makes every effort to refresh, renew, and revives its guests thereby making for an unforgettable Bali getaway.

AT A GLANCE

- 3 pools
- Open daily from 7am - 7pm





DREAM



LA VILLA DES ENFANTS

A host of engaging and stimulating activities awaits our little patrons, which sets this resort's kids club apart from similar facilities at other five-star resorts. From indoor activities comprising of storytelling, reading sessions and video games featuring the latest consoles, to outdoor fun where they can get close to nature through some gardening, hone some basic skills through cooking classes, become a 'princess' for a day, yoga for kids, splashing about in the outdoor kids' pool behind the facility or head out on the sand for various beach games.

AT A GLANCE

- Open daily from 8am to 6pm
- Complimentary for first 4 hours
- Outdoor kids pool depth: 0.5 metre





ENERGIZE



GET ACTIVE

Why not take the time to experience some unique instants magiques, or 'magical moments', in the name of relaxation and fitness? When it comes to beauty and wellbeing, discover what French know how to offer when it blends with a modern approach to service and standards. We wish you to enjoy relaxing, luxury moments in our company.

PROGRAMS

- Fitness Programmes
- Aquarobics
- Water Polo
- Badminton
- Ping Pong
- Volley Ball
- Petanque
- Soccer
- Volley Ball





BICYCLE TOUR

Suitable for couples and families alike, guests at our resort are invited to stay fit, have fun and explore the affluent address that is the Nusa Dua beachfront. As part of the luxurious Nusa Dua resort complex, the resort is blessed with a beachfront promenade where you can pedal safely, as well as lush gardens around the well-maintained enclave.



AQUAROBICS

Gain well-toned muscles and a beneficial workout with our aquarobics, otherwise known as water aerobics. This aerobic exercise in the safe and shallow waters of our luxurious resort pools will help you exercise with the help of natural resistance training and a series of breathing exercises.



YOGA BY THE BEACH

Take your Yoga training further with a change of setting - all in the beautiful surrounds of Sofitel Bali Nusa Dua Beach Resort's splendid Nusa Dua beachfront. Common practices such as the series of Yoga poses, breathing exercises and meditation are enhanced with the sense of calm provided by the warm morning sun, soft sand, fresh and gentle ocean breezes and the soothing sounds of the lapping waves.



BOOTCAMP

For those who wish to get fit through a more serious series of workout routines can join our bootcamp sessions at the resort. Train hard under the guidance of professional fitness instructors who can help and motivate you to gain muscle, improve your balance and endurance, and attain better overall health.

EXPERIENCE



CHALLENGE

TEAM BUILDING

The group may select 2 (two) ice-breaker games and 4 (four) main team games. Sofitel Bali Nusa Dua Beach Resort will provide a sound system with a selection of music, MC/host for the games, 2 (two) pieces of wireless microphones, a standing flip chart, cold towels and cold mineral water.

SOFITEL VOLLEY BALL

A volleyball on the beach just like a regular one. However, the net will be covered with a black screen. Both teams could not see each other. This creates fun and curiosity.

SOFITEL TRUST

Known also as trust fall, is an activity designed to build trust among friends in a group or team. This will be guided by an experienced trainer.

SOFITEL GOLDEN EGG

The goal of the game is simple. It is to design and build a system that will protect an egg from a 1 metre (3,3 feet) drop. Eggs that smash or crack fail the test, while eggs that survive without a scratch, pass.

SOFITEL BEER BOX

Each group will be provided with a set of beer boxes. They will compete with one another to reach the finish line shown by the facilitator. Every member of the group should stand on top of the beer boxes until the finish line without falling apart.





RELAX

SOFITEL SPA

Open daily 9:00am - 10:00pm, the last treatment is at 9:00pm. Retreat to heavenly SOFITEL SPA and succumb to blissful massages and beauty treatments. SOFITEL SPA is a signature Sofitel Spa located on the Ground Floor. Reservations: SOFITEL SPA treatment reservations can be made from your room by calling Guest Services. Arrival information: We encourage you to arrive at least 15 minutes prior to your scheduled treatment time for you to slip into a robe and relax before your appointment.





CELEBRATE



**IMMERSE
YOURSELF
IN A
UTOPIA
OF ART,
LEISURE,
AND
FLAVORS**

Set to become the south of Bali's premier lifestyle destination, Manarai Beach House welcomes guests to embrace the endless summer vibes and immerse into tropical delights. The seaside escape strikes a balance between traditional Balinese craftsmanship and contemporary modern architecture with its wooden and terrazzo design elements. Set on the calm shores of Nusa Dua, the space presents a seamless landscape from the indoor restaurant, through the eclectic open-air dining space with its two fresh water pools, and onto the white sandy beach also offering the ideal setting for a perfect summer, during its regular period Manarai Beach House provides free-entry and no minimum charge daybeds to its weekly DJ pool-side sessions.



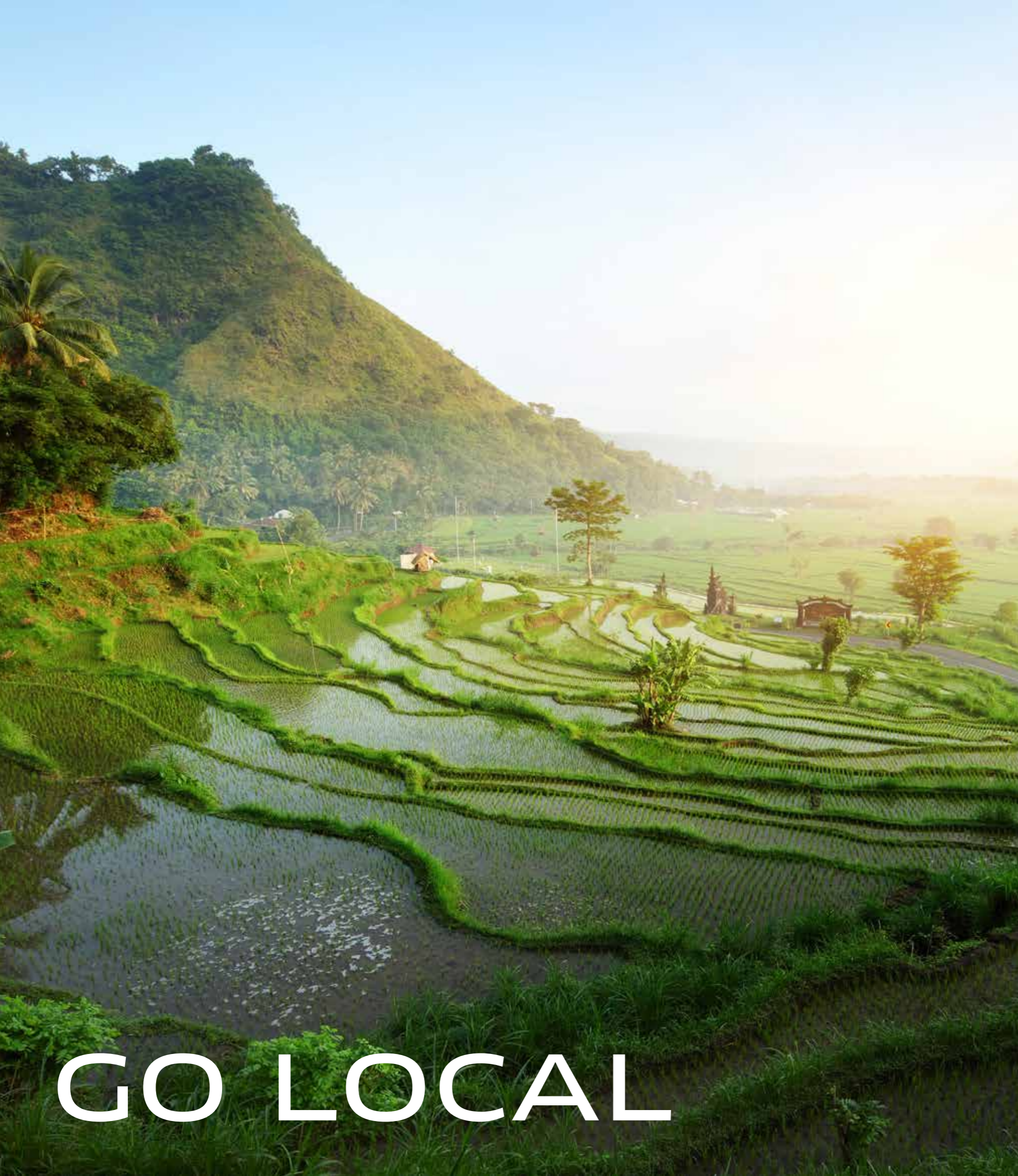


SOUTH BALI SUNSET AND CULTURAL TOUR HALF DAY TOUR (2PM – 8PM)

Enjoy a perfectly combined tour of the grand cultural park of Garuda Wisnu Kencana (GWK) and the magnificent Uluwatu Temple where you can enjoy the famous Kecak Dance against a dramatic sunset over the Indian Ocean. Your half day trip concludes with a savoury seafood dinner on Jimbaran Beach.

OPTIONAL INTERESTING PLACES

- Seafood dinner on Jimbaran Beach
- Dinner at Bumbu Bali restaurant for authentic Balinese cuisine



GO LOCAL



UBUD CULTURAL EXPERIENCE AT A GLANCE HALF DAY TOUR (9AM – 3PM)

Explore the artistic and cultural heart of Bali, where local and foreign artists find inspiration from the highland beauty of Ubud. Discover the signature stone carving and painting culture of Batuan Village; visit an enchanted monkey forest in the town centre, and the amazing views over the lush rice terraces at Tegallalang, and last but not least, visit the famous local art market of Sukawati. It is very exciting to explore the daily life, market activities and cultural experiences of the local Balinese community.

OPTIONAL INTERESTING PLACES

- Visiting Ubud Royal Palace
- Try out the Balinese delicacy of Babi Guling roast pork at Warung Ibu Oka
- Enjoy artisanal coffee at Seniman Coffee Studio



GO LOCAL



WATER TEMPLES EXCURSION FULL DAY TOUR (8:30AM – 4:30PM)

Experience three famous water temples in Bali: Taman Ayun Temple, Ulun Danu Temple and the magnificent Tanah Lot Temple. Ulun Danu Temple was named after the lake where the temple was built and is an inseparable element of Mount Beratan. Built to honour the deity and goddess of fertility, the temple was built to bless the island with life prosperity.

OPTIONAL INTERESTING PLACES

- Strawberry Farm in Bedugul Hill
- Visiting Botanical Gardens in Bedugul
- Fruit and Vegetable market near the lake
- Dinner at vibrant Seminyak area



GO LOCAL



**CENTRAL BALI, SCENIC VIEW,
ART AND CULTURAL TOUR
FULL DAY TOUR
(8:30AM – 4:30PM)**

Discover Bali's unique cultural heritage, handicrafts, traditional villages, spectacular lakes and volcanoes. Tour begins at the village of Batubulan to watch the Barong Dance performance, continued by visiting the Batuan painting village and Kemenuh Village to witness how local artists create their masterpieces.

OPTIONAL INTERESTING PLACES

- Visiting Ubud Royal Palace
- Try out the Balinese delicacy of Babi Guling roast pork at Warung Ibu Oka
- Enjoy artisanal coffee at Seniman Coffee Studio



GO LOCAL



**BALINESE CULTURE
EXPERIENCE
DAILY (10:00AM - 12:00NOON)**

Experience rich cultural encounters through our Balinese Culture activity at Sofitel Bali Nusa Dua Beach Resort such as dressing up in Balinese traditional attire, The Circle of Life Tour, Storytelling of Balinese & Hindu Culture, making Balinese Offerings, Praying at Hotel Temple and enjoying a Balinese Lunch at Toya Beach Bar and Grill.



**BALINESE COOKING CLASS
MONDAY TO FRIDAY
(1:00PM - 2:00PM)**

Have you ever wanted to learn how to make authentic traditional Balinese food? Learn about Bali's unique culture whilst enjoying a cooking class in Bali that incorporates traditional spices and herbs at Sofitel Bali Nusa Dua Beach Resort. Gain a valuable insight into the various techniques, traditional and modern food preparations as well as the cooking style used in homes across the island.



STAY



**LUXURY ROOM
48M²**



**LUXURY ROOM POOL ACCESS
48M²**



**PRESTIGE SUITE
120M²**



**HONEYMOON SUITE
88M²**



**ONE BEDROOM POOL VILLA
88M²**



**PRESIDENTIAL POOL VILLA
420M²**

RESORT MAP



- L LOBBY 2ND FLOOR
LE BAR 2ND FLOOR
CELLSCIENCE M FLOOR
KWEE ZEEN GROUND FLOOR
- A BLOCK ANGKLUNG BUILDING 1001-1317
- B¹ BLOCK BONANG BUILDING 2001-2319
- B² BLOCK BONANG SUITE BUILDING 2020-2323
- C BLOCK CENG-CENG BUILDING 3001-3322
- D BLOCK DEMUNG BUILDING 5001-5323
- E¹ BLOCK ENTEBONG BUILDING 6001-6323
- E² BLOCK ENTEBONG SUITE BUILDING 6025-6328
- F PRESIDENTIAL VILLA
- G 2 BEDROOMS VILLA 7002-7003
- H 1 BEDROOM VILLA 7005-7008
- I 1 BEDROOM VILLA 7009-7011
- J 1 BEDROOM VILLA 7012-7016
- K 1 BEDROOM VILLA 7017-7020
- M BALLROOM 2ND FLOOR
CLUB MILLESIME 1ST FLOOR
SOFITEL FITNESS GROUND FLOOR
SOFITEL SPA GROUND FLOOR
- N RETREAT BUILDING
- O CUCINA
- P WEDDING VENUE
- R TOYA BEACH BAR & GRILL
- S MANARAI BEACH HOUSE

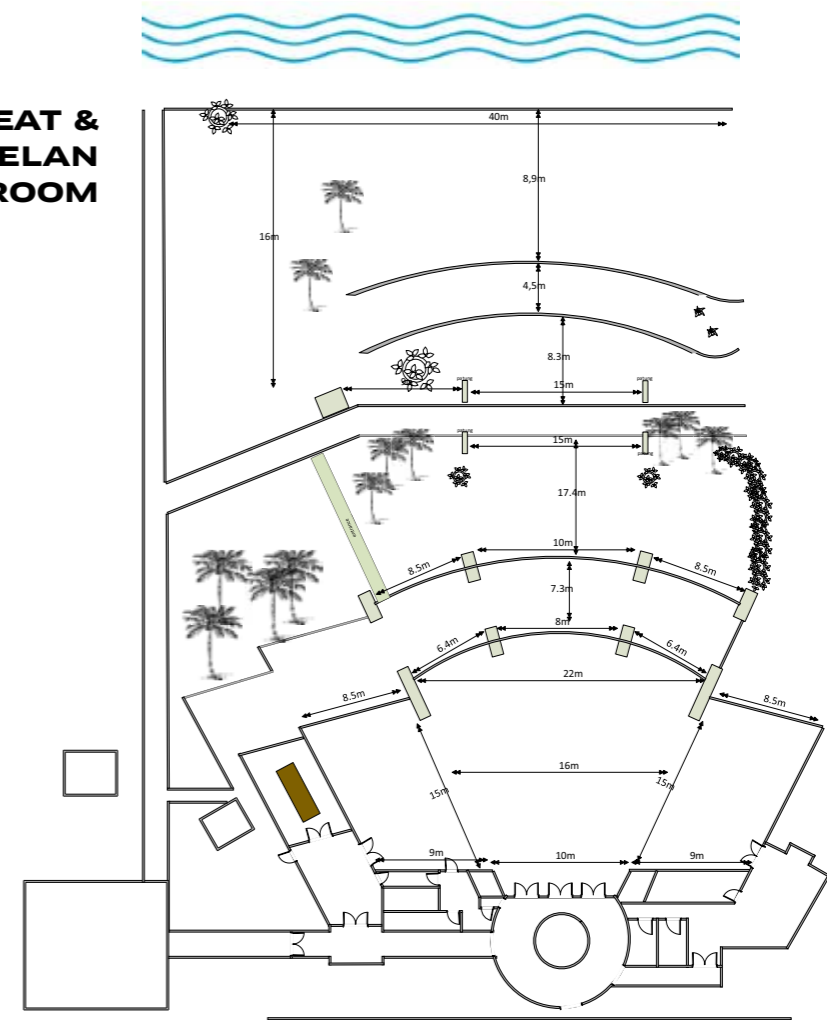


MAGNIFIQUEMEETINGS™

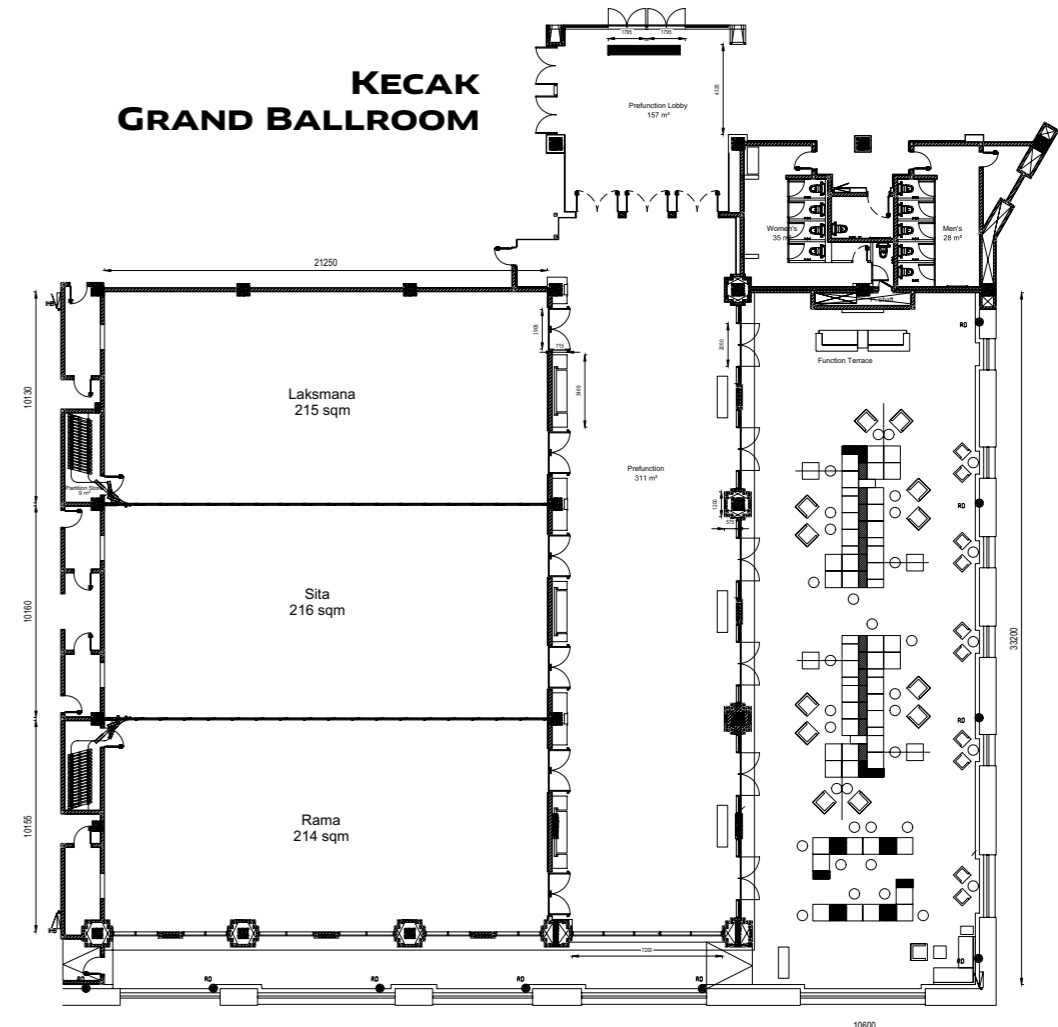
MagnifiqueMeetings™ team brings impact and flair to corporate events, from board meeting to large conferences. The concept combines the latest conference technology with a passion for excellence and is dedicated to making every event an unforgettable success. Setting the stage for MagnifiqueMeetings™ at Sofitel Bali Nusa Dua Beach Resort is an innovative set of venue choices.

MEETING	AREA M ²	HEIGHT M	THEATER	CLASS	U-SHAPE	BANQUET	BOARD	COCKTAIL
KECAK GRAND BALLROOM	600	6.5	546	288	135	380	150	650
RAMA	200	6.5	182	132	51	120	60	200
SITHA	200	6.5	182	132	51	120	60	200
LAKSAMANA	200	6.5	182	132	51	120	60	200
LEGONG	115	4.5	60	45	30	60	36	100
REJANG	64	4.5	32	24	24	30	30	50
PENDET	72	4.5	N/A	N/A	N/A	N/A	14	N/A
JANGER	47,7	3.2	20	18	9	20	6	20
GRAND BALLROOM TERRACE	285	6	320	90	96	120	40	200
BARONG	40	2.5	N/A	N/A	N/A	N/A	10	N/A
GRAND GAMELAN BALLROOM	450	6.5	420	180	126	280	170	560
GAMELAN	225	6.5	90	45	30	60	30	80
GAMELAN A	88	4.5	240	90	36	120	36	200
GAMELAN B	88	4.5	90	45	30	60	30	80
REONG	36	4.5	N/A	N/A	N/A	N/A	14	N/A
GANGSA	38	4.5	24	18	25	20	14	N/A
JEWEL BOX	117	5.5	80	40	30	60	25	100
BEACH GARDEN	720	N/A	550	N/A	N/A	320	N/A	500
RETREAT GARDEN	520	N/A	450	N/A	N/A	420	N/A	650
RETREAT BEACH	750	N/A	650	N/A	N/A	500	N/A	700

THE RETREAT & GRAND GAMELAN BALLROOM



KECAK GRAND BALLROOM









GASTRO



CUCINA OSTERIA & ENOTECA

Cucina brings a unique Mediterranean dining experience with Italian Al Fresco amidst the finest decadent Italian cuisine. Cucina also presents a magnificent Brunch À la Française every Sunday.

Opening hours: Dinner 6pm - 11pm
Sunday Brunch À la Française: 11am - 3pm
Capacity: 240 pax



KWEE ZEEN

A 160-seat Pan Asian restaurant inspired by the scenes of a street food market that is elevated to 5-star level through a dynamic and interactive experience with visible preparations in a front kitchen or 'ateliers'.

Opening hours: 24 hours
Capacity: 350 pax



TOYA BEACH BAR & GRILL

Spend your time at the breezy seaside lounge with leisurely atmosphere. Enjoy your afternoon with your light snacks, favourite cocktails and witness the sundown with the barbeque buffet.

Opening hours: 9am to 11pm
Capacity: 105 pax



L'OH POOL BAR

L'OH invites you to indulge with light bites or creative cocktails to accompany your dip in the azure-blue tiled pool.

Opening hours: 9am to 10pm
Capacity: 90 pax



SOFITEL BALI NUSA DUA BEACH RESORT

KAWASAN PARIWISATA ITDC LOT N5, NUSA DUA, BALI 80363 - INDONESIA

TEL. +62 (0)361 849 2888 - EMAIL H9078@SOFITEL.COM

WWW.SOFITEL.COM

